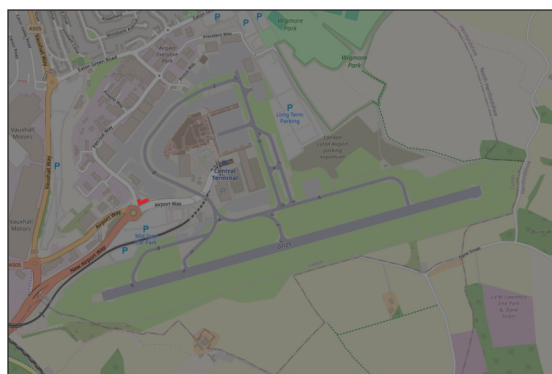


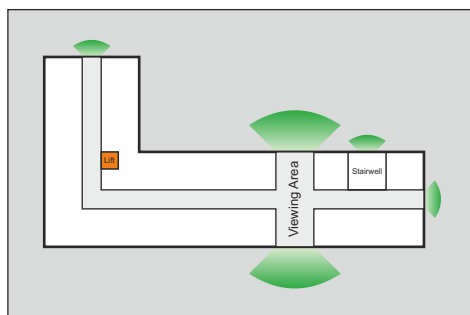
Overview

So it all started with the decision to attend the Private Flyer Fest at Wycombe Air Park and ultimately the choice was made to stay close the night before. Within an hour seemed a good measure so plenty of choice. I came across Holiday Inn Express London Luton Airport completely by accident with it showing cheaper rooms than the local competition. Its proximity to the runway seemed Ideal. A quick call to reservations and they were more than helpful arranging a room for 2 adults and 2 children on the top floor facing the runway. Its located where the red L-shaped building is on the map.

We didn't get away from Teesside till 1800hrs so with the numerous road works and speed restrictions we didn't arrive till 2300hrs. We managed to drive in without issue, however the airport access road seems very busy most of the time and although I feared that our late arrival would result in struggling for a parking space there was ample parking. I'll put the hotel details room and parking prices at the end. The room was great and very comfortable.



Hotel Layout

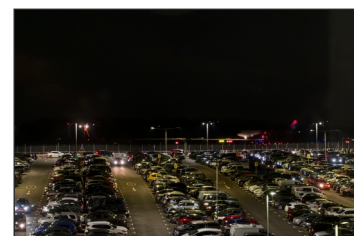
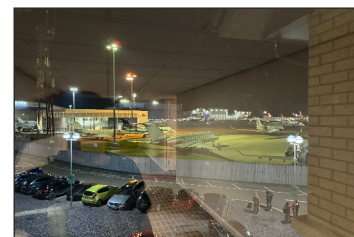


The Hotel layout is great it has 5 floors, 2 above ground and 2 below. Ground floor and above can see the movements but lower ground floors are obstructed by rising terrain. Hopefully my crude drawing of the floor plan helps. At the end of the corridors are good size windows. The North corridor end gives views of 'Gulfstream Hanger 125' and the East corridor end gives views of South Apron, Hangar 89 'Easyjet' and the Eastern end of Bizjet parking. There is an amazing viewing area on the top floor at least which gives excellent views either towards Taxiway Bravo and the Runway to the south and the throat of the main Terminal and Signature FBO to the North. To get a different angle for those just out of view reg's on the bizjets there is also a stairwell with a decent window. The breakfast area on the ground floor allows you to keep catching those arrivals and departures too.

Spotting 2300hrs till 0045hrs

As im sure you can imagine, spotting was started immediately. Quickly photographing the FBO for studying later and then face pressed firmly against the rooms window to watch the action. 07 was the runway in use for the entirety of our stay which gave the best views.

Reg	Aircraft	C/N	Owner/Operator
9H-WZU	Airbus A320-232	5608	Wizz Air Malta
EI-DCK	Boeing 737-8AS	33565	Ryanair
EI-EMC	Boeing 737-8AS	38510	Ryanair
EI-HGP	Boeing 737-8200MAX	62330	Ryanair
EI-IJI	Boeing 737-8200MAX	62369	Ryanair
G-EZAJ	Airbus A319-111	2742	EasyJet
G-EZBR	Airbus A319-111	3088	EasyJet
G-EZDX	Airbus A319-111	3754	EasyJet
G-TAWB	Boeing 737-8K5	37242	Thomson Airways
G-UZHO	Airbus A320-251N	8411	EasyJet
G-UZLM	Airbus A320-251N	10053	EasyJet
G-UZLX	Airbus A320-251N	11997	EasyJet
G-WUKP	Airbus A321-271NX	10357	Wizz Air UK
G-WUND	Airbus A321-271NX	11792	Wizz Air UK
HA-LXD	Airbus A321-231	7032	Wizz Air
TC-SEI	Boeing 737-8HC	61170	Sun Express
9H-VCP	Bombardier Challenger 350	20896	VistaJet Ltd
9H-VJI	Bombardier Global 6000	9593	VistaJet Ltd
CS-DXN	Cessna 560XL Citation Excel XLS	560-5685	NetJets Transportes Aereos
G-KGKG	EMBRAER Legacy 600	14500986	London Executive Aviation
G-SHUI	Textron Aviation 680A Citation Latitude	680A0102	Air Charter Scotland
LX-PCE	Pilatus PC-24	200	Jetfly Aviation
LX-TRO	EMBRAER Legacy 650	14501126	Luxaviation
N168NQ	Bombardier Challenger 604	5531	Corporate
N365LG	Gulfstream G650 G-VI	6049	Corporate - Ex JCB (M-JCBB)
N609GB	Gulfstream G600 G-VII	73091	Corporate
N888DQ	Gulfstream G600 G-VII	73076	Corporate



Eventually I had to do the sensible thing and go to sleep not only because I needed it but my 9 year old was way too excited and still up too.

Spotting 0600hrs till 1000hrs

I awoke and dashed to the window to resume desperate to chalk up some new frames, my luck had ran out and it was now foggy which only got worse over the first hour but then started to lift. Spent 2½hrs glued to the bedroom window, went down for breakfast which again glued to a window seat and my phone, then back to the room for the last hour before we needed to leave. Very productive too as I certainly don't see many Wizz or Biz for that matter. I tried not to duplicated in the list below the frames that were seen the night before.

Reg	Aircraft	C/N	Owner/Operator
9H-WBP	Airbus A320-232	8183	Wizz Air Malta
9H-WBT	Airbus A320-232	6093	Wizz Air Malta
9H-WDG	Airbus A321-271NX	11499	Wizz Air Malta
9H-WNB	Airbus A321-271NX	11748	Wizz Air Malta
9H-WNE	Airbus A321-271NX	11828	Wizz Air Malta
9H-WZT	Airbus A320-232	6077	Wizz Air Malta
9H-WZX	Airbus A320-232	6589	Wizz Air Malta
EC-OCT	Airbus A321-231	5350	Privilege Style
EI-DWE	Boeing 737-8AS	36074	Ryanair
EI-DYX	Boeing 737-8AS	37517	Ryanair
EI-HGP	Boeing 737-8200MAX	62330	Ryanair
EI-IFW	Boeing 737-8200MAX	62344	Ryanair
EI-IJC	Boeing 737-8200MAX	67092	Ryanair
G-EZBT	Airbus A319-111	3090	EasyJet
G-EZDV	Airbus A319-111	3742	EasyJet
G-EZFR	Airbus A319-111	4125	EasyJet
G-EZFT	Airbus A319-111	4132	EasyJet
G-EZGR	Airbus A319-111	4837	EasyJet
G-EZOF	Airbus A320-214	6525	EasyJet
G-EZRZ	Airbus A320-214	8358	EasyJet
G-EZTG	Airbus A320-214	3946	EasyJet
G-EZTT	Airbus A320-214	4219	EasyJet
G-EZUN	Airbus A320-214	5046	EasyJet
G-UZHA	Airbus A320-251N	7649	EasyJet
G-UZHJ	Airbus A320-251N	8338	EasyJet
G-UZHL	Airbus A320-251N	8375	EasyJet
G-UZHP	Airbus A320-251N	8433	EasyJet
G-UZHU	Airbus A320-251N	8681	EasyJet
G-UZLD	Airbus A320-251N	9036	EasyJet
G-UZLV	Airbus A320-251N	11617	EasyJet
G-WUKM	Airbus A321-271NX	10283	Wizz Air UK
G-WUKR	Airbus A321-271NX	10871	Wizz Air UK
G-WUKT	Airbus A321-271NX	10672	Wizz Air UK
G-WUKU	Airbus A321-271NX	10787	Wizz Air UK
G-WUKV	Airbus A321-271NX	11492	Wizz Air UK
G-WUKY	Airbus A321-271NX	11505	Wizz Air UK
G-WUNA	Airbus A321-271NX	11591	Wizz Air UK
G-WUNB	irbus A321-271NX	11655	Wizz Air UK
HA-LTD	Airbus A321-231	8305	Wizz Air
HA-LXL	Airbus A321-231	7488	Wizz Air
HA-LXN	Airbus A321-231	7532	Wizz Air
HA-LZK	Airbus A321-271NX	10959	Wizz Air
HA-LZU	Airbus A321-271NX	10989	Wizz Air
D-AEAE	Airbus A300B4-622RF	753	European Air Transport
D-AEAT	Airbus A300B4-622RF	740	European Air Transport
9H-ILB	Bombardier CRJ200	8107	VistaJet Ltd
9H-VIL	Bombardier Global 7500	70109	VistaJet Ltd
CS-DXU	Cessna 560XL Citation Excel XLS	560-5775	NetJets Transportes Aereos
CS-LTD	Cessna 680A Citation Latitude	680A0097	NetJets Transportes Aereos
G-OLIV	Raytheon B200 King Air	BB-1835	Dragonfly Aviation Services
N121CL	Bombardier Global 7500	70165	Corporate
N73ZZ	Gulfstream G-V	593	Corporate
N770KF	Bombardier Global 6000	9749	Corporate
OE-LEO	Gulfstream G650 G-VI	6278	Global Jet Austria
VT-ASR	Bombardier Global 7500	70129	Corporate

The photos are just a gauge of what's achievable its by no means a photo location although the FBO Apron is probably manageable. This was a fleeting visit and the airframes I bagged were just opportunistic. I probably could have done far better leaving the hotel and going for a walk as there were a lot of Biz that I could only see a wingtip or nose. Im told there's good public transport links if you don't drive too.



Holiday Inn Express London - Luton Airport

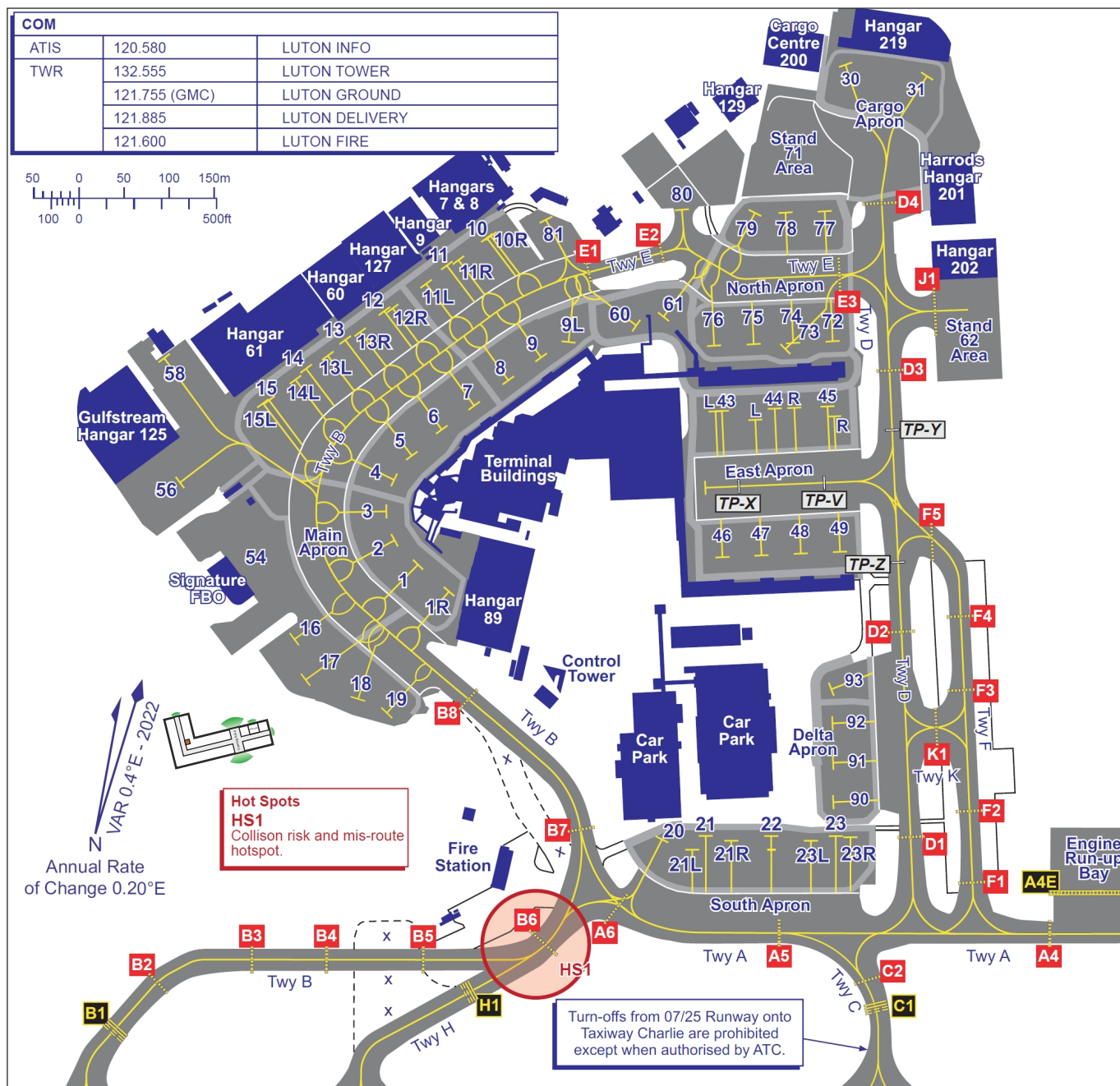
- **Address:** 2 Percival Way, London LU2 9GP
- **Phone:** 0371 902 1622
- **Website:** <https://tinyurl.com/56vudvzf>

Check in is possible from 1500hrs with check out at 1100hrs.

Our room a family room double bed and double sofa bed for 4 people cost £127 this includes complementary breakfast with 4 fried items and various cereals and pastries.

Parking is £15 with a discount code from the Hotel and costs £25 for none guests.

Below I have placed the hotel on the UKAIP Parking and Docking Chart.



For this and more please visit www.neai.co.uk